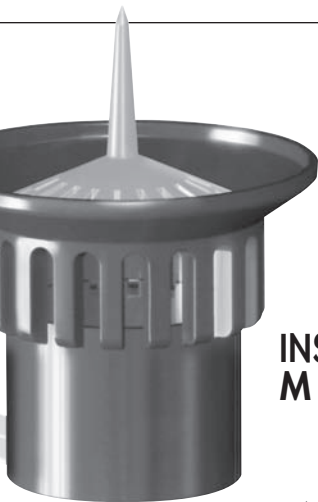


RAIN sensor



INSTRUCTIONS MANUAL



90915

claber®



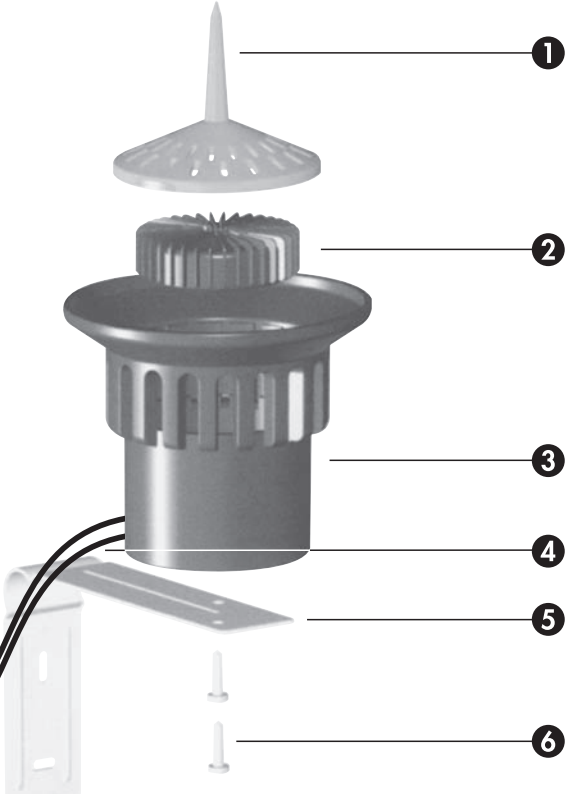
RAIN SENSOR

10

THANK YOU FOR CHOOSING OUR RAIN SENSOR. CAREFULLY READ THIS INSTRUCTIONS MANUAL BEFORE PROGRAMMING. EACH SECTION CONTAINS ALL THE INFORMATION REQUIRED FOR THE CORRECT EXECUTION OF EACH OPERATION.

KEY:

- ① TOP COVER
- ② FLOAT
- ③ UPPER RECIPIENT
- ④ SENSOR CABLES
- ⑤ STAINLESS STEEL BRACKET
- ⑥ BRACKET SCREWS



RAIN SENSOR STOPS TIMED WATERING PROGRAMS IN THE EVENT OF RAIN, THEN RESUMES THEM AUTOMATICALLY WHEN IT STOPS RAINING: ABSOLUTELY RELIABLE, EVEN WHEN YOU'RE AWAY.

HOW IT WORKS: THE RAIN WATER COLLECTED IN THE UPPER RECIPIENT POURS DOWN AND LIFTS THE FLOAT. WHEN THE FLOAT REACHES A LEVEL EQUAL TO 5 MM OF RAIN (CORRESPONDING TO AN OPTIMAL IRRIGATION QUANTITY), THE FLOAT SHUTS DOWN THE TIMER ELECTRIC CIRCUIT. WHEN THE SUN COMES OUT AGAIN, THE WATER EVAPORATES THROUGH THE HOLES, THE FLOAT LOWERS AND THE TIMER RESTARTS THE WATERING PROGRAM SET BY THE USER. THE FLOAT IS COATED WITH A SPECIAL SYNTHETIC MATERIAL THAT ALLOWS BETTER EVAPORATION OF WATER INSIDE THE SENSOR.

HOW TO INSTALL THE RAIN SENSOR

UK

13

CUT THE COMMON SOLENOID VALVE CABLE, THEN CONNECT THE TWO ENDS TO THE SENSOR LEADS (SEE FIGURE 1).

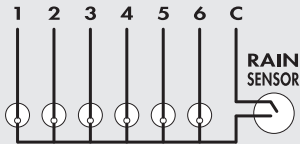
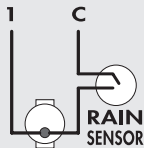


FIGURE 1



FIGURE 2

IMPORTANT: INSTALL THE RAIN SENSOR IN A CLEAR AREA OF THE GARDEN, WITHOUT VEGETATION COVERAGE, AWAY FROM THE SPRINKLERS.

USE THE STAINLESS STEEL BRACKET SUPPLIED TO MOUNT THE SENSOR (FIGURE 2).



FIGURE 3

IMPORTANT: TO ENSURE CORRECT SENSOR OPERATION, POSITION THE FLOAT INSIDE THE CONTAINER WITH THE RADIAL WINGS UPWARDS AND THE ORANGE BOTTOM DOWNWARDS (FIGURE 3).

IMPORTANT: KEEP THE COVER IN PLACE TO PREVENT LEAVES OR IMPURITIES FROM IMPAIRING CORRECT OPERATION OF THE RAIN SENSOR. THE COVER FEATURES A SPECIAL POINT TO PREVENT BIRDS OR OTHER ANIMALS FROM RESTING ON THE SENSOR (FIGURE 4).

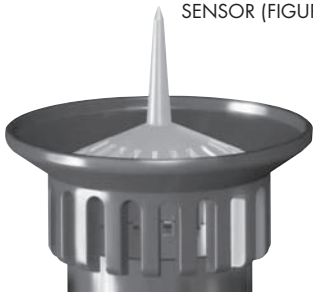


FIGURE 4

THE SYMBOL IN QUESTION, APPLIED TO THE PRODUCT OR TO THE PACKAGE, INDICATES THAT THE PRODUCT SHOULD NOT BE CONSIDERED NORMAL DOMESTIC WASTE, BUT MUST BE TAKEN TO THE APPROPRIATE COLLECTION POINT FOR THE RECYCLING OF ELECTRIC AND ELECTRONIC DEVICES. ENSURING THAT YOU DISPOSE OF THE PRODUCT IN THE APPROPRIATE WAY CONTRIBUTES TO AVOID POTENTIAL NEGATIVE CONSEQUENCES THAT MIGHT ARISE FROM UNSUITABLE DISPOSAL OF THE PRODUCT. FOR FURTHER INFORMATION ABOUT RECYCLING OF THIS PRODUCT, CONTACT YOUR LOCAL MUNICIPAL OFFICES, THE LOCAL MUNICIPAL WASTE DISPOSAL SERVICE OR THE POINT-OF-

SALE WHERE YOU PURCHASED THIS PRODUCT.



claber® SPA

WARRANTY

THE WATER TIMER IS WARRANTED FOR A PERIOD OF TWO YEARS FROM THE DATE OF PURCHASE, THAT IS CERTIFIED BY THE INVOICE OF RECEIPT WHEN PURCHASING. THE WARRANTY IS VOID IF THE PRODUCT HAS BEEN DAMAGED BY ACCIDENT, MISUSE OR ABUSE OR IN LACK OF THE BILL SHOWING THE PURCHASE DATE.

WRITE THE SERIE NUMBER

--	--	--	--	--	--	--

GENERAL CONDITIONS OF WARRANTY

LABER GUARANTEES THAT ITS APPLIANCE DOES NOT PRESENT DEFECTS REGARDING THE MATERIALS EMPLOYED AND THE CONSTRUCTION. DURING THE 24-MONTH PERIOD FOLLOWING THE DATE OF DELIVERY TO THE CUSTOMER, CLABER SHALL EITHER REPLACE OR REPAIR THE DEFECTIVE PRODUCT FREE OF CHARGE IF THE APPLIANCE HAS BEEN EMPLOYED IN NORMAL WORKING CONDITIONS, IF MAINTENANCE HAS BEEN CARRIED OUT BY AUTHORIZED PERSONNEL AND IF IT HAS NOT BEEN MODIFIED IN ANY WAY. CLABER SHALL NOT BE LIABLE FOR DAMAGE DUE TO THE CUSTOMER'S MISUSE OR TO ERRORS OCCURED DURING INSTALLATION. FOLLOW THE INSTRUCTIONS AND INSTALLATION PRESCRIPTIONS REGARDING THE USE OF OUR PRODUCT.

CLABER SHALL NOT BE LIABLE FOR DAMAGE OF PRODUCTS MANUFACTURED BY OTHER COMPANIES EVEN IF COMBINED WITH THEIR APPLIANCES. THE PRODUCT CAN BE MAILED TO OUR ASSISTANCE CENTER ONLY IF THE CUSTOMER HAS BEEN AUTHORIZED TO DO SO; THE RISKS WHICH OCCUR DURING TRANSPORT ARE ENTIRELY CHARGED TO THE CUSTOMER. REFER TO THE GENERAL SALES CONDITIONS IN FORCE WHATEVER ELSE SHOULD OCCUR. FOR ANY FURTHER INFORMATION ON OUR SERVICING, YOU MAY CONTACT CLABER SPA, TEL. (+39) 0434.958836 - FAX (+39) 0434.957193.

www.claber.com
info@claber.com

claber® SPA